



Accessories

Base Kits & Riser Blocks

Horizontal Base Kits



Vertical Base Kits



Unit Size	Kit Number
213	16460
215	16461
218	16462
220	16463
224	16464
226	16465
230	16466
232	16467
242	16468
252	16469
2600	13162
2700	13462
2800	13463
21000	13464

Unit Size	Kit Number
213	16470
215	16471
218	16471
220	16473
224	16474
226	16475
230	16476
232	16477
242	16478
252	16479
2600	13160
2700	13467
2800	13468
21000	13469

J Mount Base Kits



Riser Blocks



Unit Size	Kit Number
213	16480
215	16481
218	16481
220	16483
224	16484
226	16485
230	16486
232	16487
242	16488
252	16489

Unit Size	Kit Number
215	16514
218	16515
220	16516
224	16517
226	16518
230	16519
232	16520
242	16521
252	16522

C Flange Kits and Hollow Shaft Tie Rod Kits

C Flange Motor Mounting Kits

Unit Size	"C" Flange Size	Kit Number
213	48C	16500
	56C	16501
	140TC	16502
215	48C	16530
	56C	16531
	140TC	16532
218	48C	16530
	56C	16531
	140TC	16532
220	48C	16530
	56C	16531
	140TC	16532
224	56C	16503
	140TC	16504
	180TC	16505
	210TC	16506
226	56C	16503
	140TC	16504
	180TC	16505
	210TC	16506



Unit Size	"C" Flange Size	Kit Number
230	56C	16507
	140TC	16508
	180TC	16509
	210TC	16533
232	56C	16507
	140TC	16508
	180TC	16509
	210TC	16533
242	56C	16527
	140TC	16534
	180TC	16528
	210TC	16535
	250TC	16529
252	56C	16527
	140TC	16534
	180TC	16528
	210TC	16535
	250TC	16529
2600	180TC	13163
	210TC	13168
	250TC	13164

Hollow Shaft Tie Rod Kit



Unit Size	Kit Number
213	12178
215	12178
218	12178
220	12178
224	12178
226	12178
230	12178
232	12178
242	12178
252	13345
2600	13345
2700	N/A
2800	N/A
21000	N/A

Hollow Output Mounting Flange Kit (Hollow Output Units Only)



Unit Size	Kit Number
213	16490
215	16490
218	16492
220	16493
224	16494
226	16495
230	16496
232	16496
242	16498
252	16499
2600	13165

Note: Unit sizes 213-252 have only one low speed face with bolts that this flange kit can be mounted to. Please verify the correct assembly position before ordering.

Accessories

Kits

Double Reduction Adaptor Kit



Unit Size (Prim/Sec)	Kit Number	Secondary Unit Quill Size
213/213	16537	56C
213/215	16537	56C
213/218	16537	56C
213/220	16537	56C
213/224	16538	56C
213/226	N/A	-
215/230	N/A	-
215/232	N/A	-
220/242	16539	180TC
226/252	16540	210TC
232/2600	16541	250TC

Note: Double reduction adaptors not available as a kit for unit sizes 1700-11000. These units must be ordered as double reduction from the factory.

Kit for use with a "B" or "BMQ" style primary unit and a quill style (MQ) secondary unit. Secondary unit must have the size quill "C" flange shown above.

For recommended ratio combinations, see table on page 170.

Slide Base



For use with B/BM/BMQ or H/HM/HMQ units to adjust output shaft location.

Unit Size	Part No.	Motor Frame Size	Part No.
213	13669		
215	13669	48C	13672
218	13669	56C	13672
220	13669	143T	13672
224	13670	182T	13673
226	13670		
230	13671		
232	13671		

Oil Level Sight Gage



Unit Size	Part Number
213	95255
215	95255
218	95255
220	95255
224	95255
226	95255
230	95255
232	95255
242	95255
252	95256
2600	95256
2700	95257
2800	95257
21000	95258

For use to visually check oil level of gear box.

Touch Up Paint 16 oz. can Contact Factory



Worm Gear Reducer Lubricant



Size	Part Number	
	Mobil 600W	Mobil SHC 634*
Quart	16563	16566
Gallon	16564	NA
2.5 Gallons	16565	NA

*Synthetic lubricant



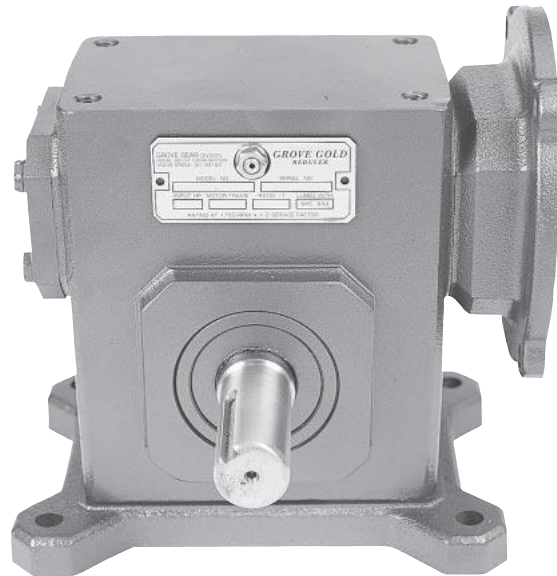
GROVE GEAR Worm Gear Speed Reducers

Grove Gold Option

For Special Applications

Low Maintenance/Lubed for Life, Good For:

All types of conveying
Packaging machines
Rotating applications
Hard to get to locations
Gates and doors
Car wash industry
Chemical industry
Plastics industry...



Features

- Internal pressure compensating system keeps the internal pressure down, oil in the box, and contaminants out.
- Double lip Viton® Seals for long life in harsh environments.
- Synthetic Lubricant never needs to be changed.
- All cast iron exterior for strength and durability.
- "O"ring sealed covers for positive lubrication retention.
- Metal nameplate drive screwed to housing for positive identification.
- Non-compressible metal shims keep bearing settings constant.
- Worms are cut, heat treated, ground and polished to provide efficient and quiet operations.

Sizes Available

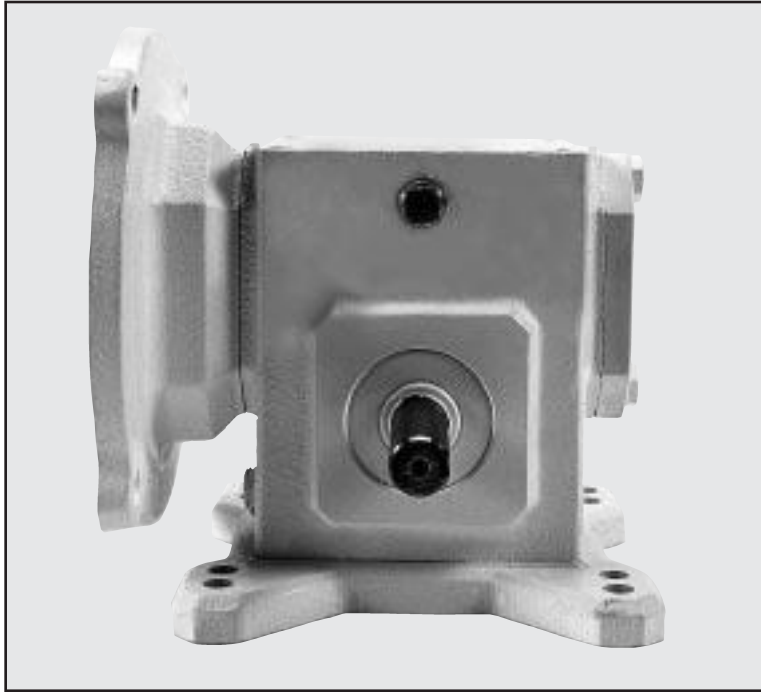
All sizes from 1/3" CD (213) to the 5-1/4" CD (252).

Models Available

All models available in Single and Double Reduction Styles.

FLEXACLEAN

GROVE GEAR BISSC Certified Worm Gear Speed Reducers



For Special Applications

Suitable for Wash Down In:

- Food Industry
- Baking Industry
- Poultry Industry
- Canning Industry
- Meat Packing Industry
- Bottling Industry
- Chemical Industry
- All types of Conveying
- Pharmaceutical Industry...

Certifications:

Baking Industry Sanitation Standard
Committee (BISSC) Certified
Standard Lubrication is USDA H-2 Approved
Paint is USDA Approved for incidental food contact.

Features

- White, USDA approved paint on the all cast iron exterior of the reducer.
- Nickel plated shafts are standard for long rust resistant life. (Stainless Steel also available.)
- Smooth Exterior of the reducer for easy cleaning.
- Double lip Viton® seals for long life in wash-down applications.
- Solid head plugs and bolts for cleanability.
- Stainless Steel nameplates sealed to housing for positive identification.

Models & Styles Available

Reducer sizes 213 to 2600 are available in the following styles:

B, BM, BMQ, T, TM, TMQ, U, UM, UMQ, V, VM, VMQ, J, JM, JMQ, H, HM, and HMQ.

Reducer sizes 2700, 2800, and 21000 are available in the following styles:

B, T, U, V, and H.

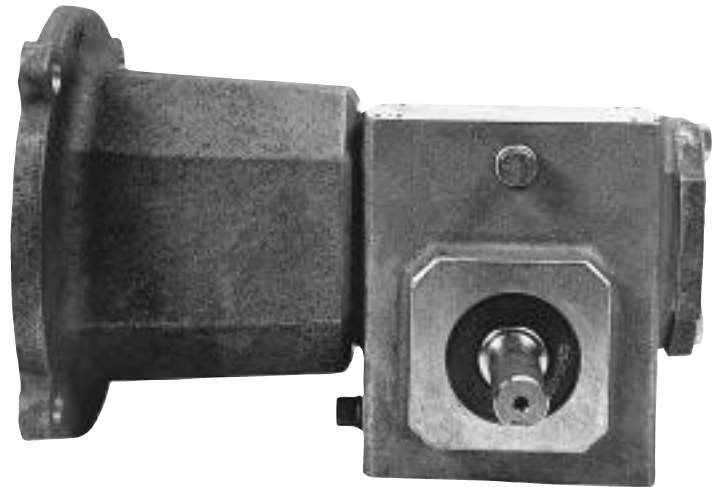
GROVE GEAR

GROVE GEAR Stainless Steel Reducers

For Very Special Applications

The Ultimate Heavy Duty Wash-Down Speed Reducer:

- All Wash Down Applications
- Poultry Processing
- Sea Food Processing
- Car Wash Applications
- Chemical Industry
- Pharmaceutical Industry

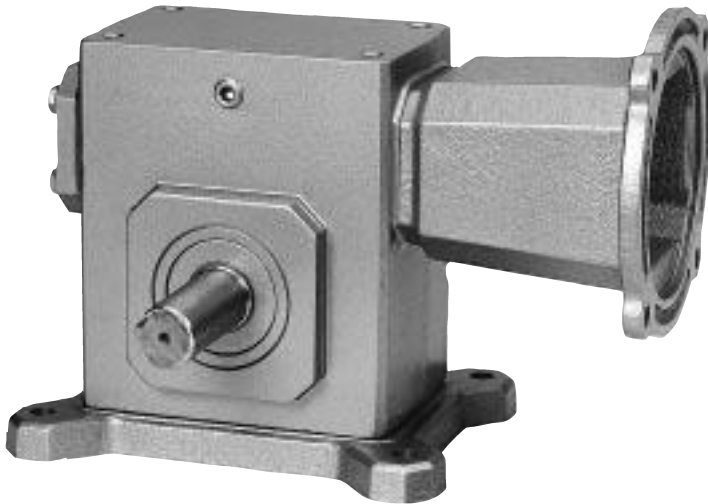


Features

- Housing and covers are 316 grade Cast Stainless Steel to withstand the harshest environments.
- Output shaft is 303 stainless steel for long rust resistant life.
- Internal pressure compensating system keeps internal pressure down, oil in the box, and contaminants out.
- Double lip stainless steel case Viton® seals for superior performance in harsh environment.
- Synthetic lubricant never needs to be changed.
- "O"ring sealed covers for positive lubrication retention.
- Stainless Steel nameplate drive screwed to housing for easy identification.
- Non-compressible stainless steel shims keep factory bearing settings constant.
- Worms are cut, heat treated, ground, and polished to provide efficient, quiet operation.
- External hardware all stainless steel.

Sizes and Models Available...

Model	Size			
	213	215	224	232
BM	✓	✓		
BMQ	✓	✓	✓	✓
HMQ			✓	✓
DMQ			✓	✓
DHMQ			✓	✓



For Low Noise Applications

Designed and Assembled to your Specifications:

- Quiet Room Applications
- Medical Industry
- Entertainment Industry
- Exercise Equipment
- Conveyors all Types
- Food Preparation
- Positioning devices

Features

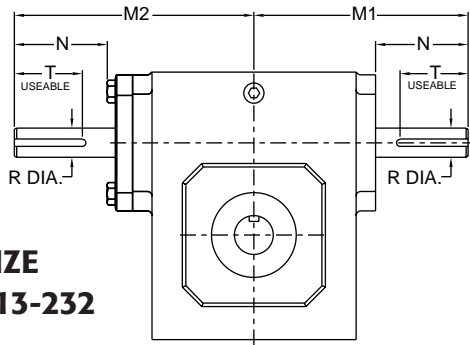
- Solid cast iron housing and covers for quiet, steady performance.
- Worms are cut, heat treated, ground, and polished for smooth quiet operation.
- Solid style input shaft with bearings on both ends trapped in place for vibration free, quiet performance.
- The reducer is tailored to your needs; contact factory with your requirements and a complete description of the application.

Sizes Available: All sizes from 1 1/3"CD (213) to 10"CD (21000)

Styles Available: All types except quill input motor flange models

Double Input Shafts

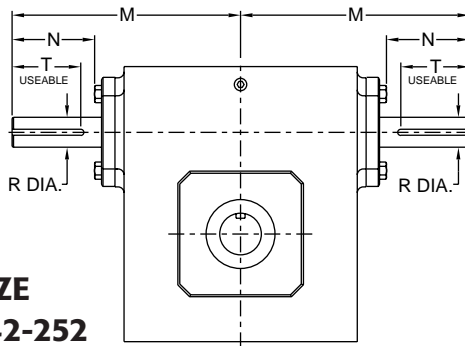
Solid/Solid



SIZE
213-232

Unit	M1	M2	N	R	T**
213	3.82	4.37	1.76	.500	1/8 x 1.44
215	4.35	4.90	1.76	.625	3/16 x 1.50
218	4.45	5.00	1.76	.625	3/16 x 1.50
220	4.82	5.37	1.76	.625	3/16 x 1.50
224	5.51	6.15	2.38	.750	3/16 x 1.50
226	6.07	6.72	2.38	.750	3/16 x 1.50
230	6.57	7.22	2.38	.875	3/16 x 1.50
232	6.76	7.40	2.38	.875	3/16 x 1.50

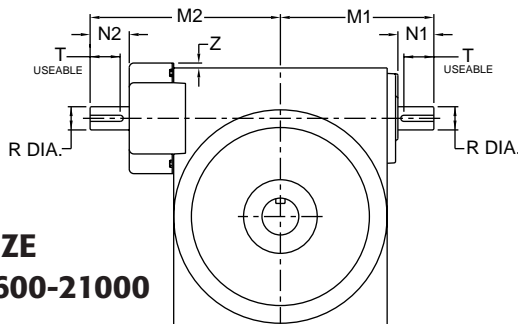
**keyway width by length



SIZE
242-252

Unit	M	N	R	T**
242	9.57	3.47	1.250	1/4 x 2.88
252	10.88	3.38	1.250	1/4 x 3.00

**keyway width by length

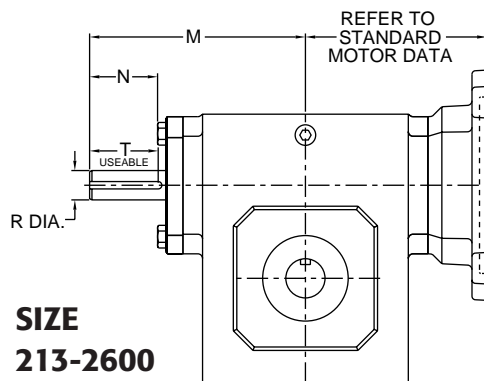


SIZE
2600-21000

Unit	M1	M2	N1	N2	R	T**	Z
2600	11.78	14.55	3.41	3.41	1.5	3/8 x 3.00	.33
2700	11.50	13.88	2.97	2.51	1.625	3/8 x 2.81	.35
2800	12.50	15.50	2.84	2.98	1.875	1/2 x 2.81	.57
21000	15.50	18.82	3.76	4.13	2.250	1/2 x 3.69	.51

**keyway width by length

Quill/Solid



SIZE
213-2600

Unit	M	N	R	T**
213	4.37	1.76	.500	1/8 x 1.44
215	4.90	1.76	.625	3/16 x 1.50
218	5.00	1.76	.625	3/16 x 1.50
220	5.37	1.76	.625	3/16 x 1.50
224	6.15	2.38	.750	3/16 x 1.50
226	6.72	2.38	.750	3/16 x 1.50
230	7.22	2.38	.875	3/16 x 1.50
232	7.40	2.38	.875	3/16 x 1.50
242	9.55	3.47	1.250	1/4 x 2.88
252	10.88	3.39	1.250	1/4 x 3.00
2600*	14.55	3.41	1.500	3/8 x 3.00

*comes standard with fan (not shown)

**keyway width by length

Note: When ordering a double input shaft for single reduction units, include the letter "A" added to the assembly position number in the unit description (i.e., TMQ 213-20-2A-56C). When requesting a double input shaft for double and triple reduction units, contact factory. For availability of vertical double input shafts, contact factory.