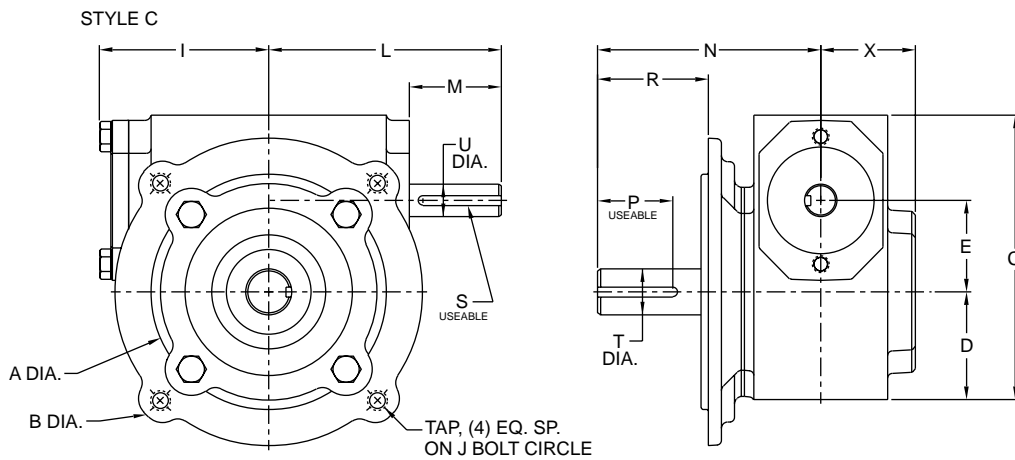


Single Reduction

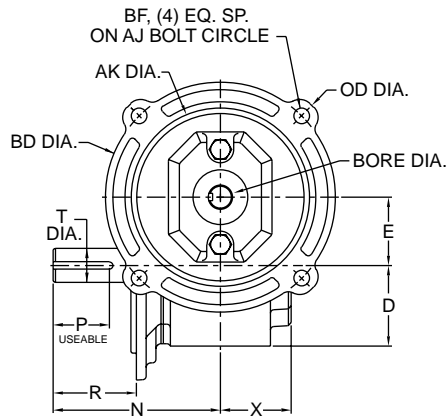
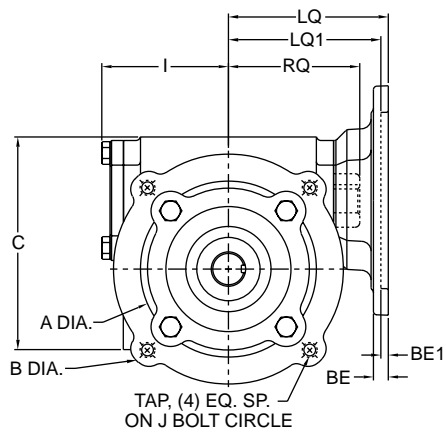
Worm Gear Dimensions

Style C

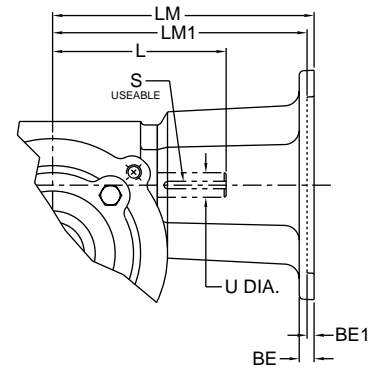


Styles CMQ & CM

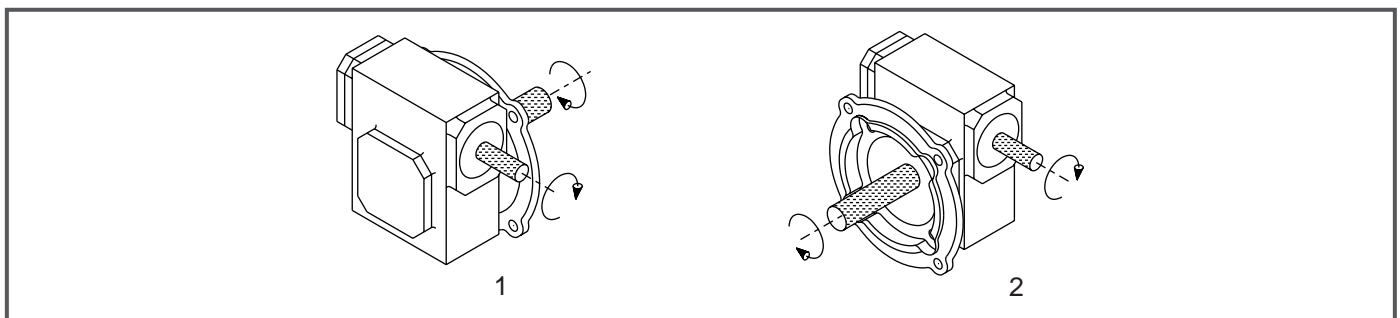
STYLE CMQ
(NEMA AND IEC B5 METRIC MOTORS)



STYLE CM
(NEMA MOTORS ONLY)



Assemblies



Note: The input shaft may be rotated in either direction. Units are for mounting as shown. Contact factory for other mountings or assembly position options. Assembly positions also apply to motor flange units ("MQ" and "M").

GROVE GEAR

Davis Industries, Inc. Phone & Fax: 800-577-0559 E-mail: sales@davis-ohio.com

Single Reduction

Styles C, CMQ, CM

Dimensions

UNIT	C	D	E	I	L	M	N	S**	U Dia.	X
213	4.66	1.72	1.333	2.61	3.82	1.76	5.00	1/8 x 1.44	.500	1.84
218	5.44	2.06	1.750	3.24	4.45	1.76	4.28	3/16 x 1.50	.625	1.81
224	6.88	2.69	2.375	3.77	5.51	2.38	6.59	3/16 x 1.75	.750	1.97

**keyway width by length

Output C-Face Dimensions

UNIT	FRAME SIZE	A	B	J	P**	R	T Dia.	TAP
213	56C	4.500	6.64	5.875	3/16 x 1.44	2.06	.625	3/8-16
218	140TC	4.500	6.63	5.875	3/16 x 1.44	2.13	.875	3/8-16
224	180TC	8.500	8.50	7.250	1/4 x 1.81	2.37	1.125	1/2-13

**keyway width by length

NEMA Motor Data

NEMA Motor Flange Face Locations

UNIT	48CZ			56C/140TC			180TC			210TC		
	LM	RQ	LQ	LM	RQ	LQ	LM1	RQ	LQ1	LM1	RQ	LQ1
213	5.63	3.09	3.46	6.07	3.09	3.46	N/A	N/A	N/A	N/A	N/A	N/A
218	6.26	3.59	4.09	6.70	3.59	4.09	N/A	N/A	N/A	N/A	N/A	N/A
224	N/A	N/A	N/A	7.76	4.09	4.63	8.76	4.56	5.06	8.76	N/A	N/A

NEMA Motor Mounting Dimensions

Frame	AJ	AK	BD	OD	BE	BE1	BORE	KWY.**	BF
48CZ	3.75	3.00	3.88	4.36	.38	N/A	.500	1/8 x 1/16	.28
56C	5.88	4.50	5.88	6.64	.38	N/A	.625	3/16 x 3/32	.41
140TC	5.88	4.50	5.88	6.64	.38	N/A	.875	3/16 x 3/32	.41
180TC	7.25	8.50	9.00	N/A	N/A	.50	1.125	1/4 x 1/8	.53
210TC	7.25	8.50	9.00	N/A	N/A	.50	1.375	5/16 x 5/32	.53

**keyway width by depth

Note: All dimensions listed are for reference only. Contact factory for certified dimensions.

⚠WARNING For safety, purchaser or user should provide protective guards over shaft extensions and any couplings, sheaves and belts, sprockets and chains, etc., mounted thereon.

Metric Motor Data

IEC B5 & B3/B5 Metric Motor Flange Face Locations

UNIT	D63D		D71D		D80D	
	LQ	RQ	LQ	RQ	LQ	RQ
213	2.62	2.45	2.65	2.47	2.89	2.71
218	3.25	2.95	3.28	2.97	3.52	3.21
224	N/A	N/A	3.72	3.46	4.34	3.71

Note: Metric motor flanges are available in quill-style (CMQ) only.

IEC B5 & B3/B5 Metric Motor Mounting Dimensions

(All dimensions given in millimeters)

Frame	AJ	AK	BD	OD	BE	BORE	KWY.**	BFTAP
D63D	115	95	117	131	10	11	4 x 2	M8 x 1.25
D71D	130	110	132	146	11	14	5 x 2.5	M8 x 1.25
D80D	165	130	165	184	15	19	6 x 3	M10 x 1.50

**keyway width by depth