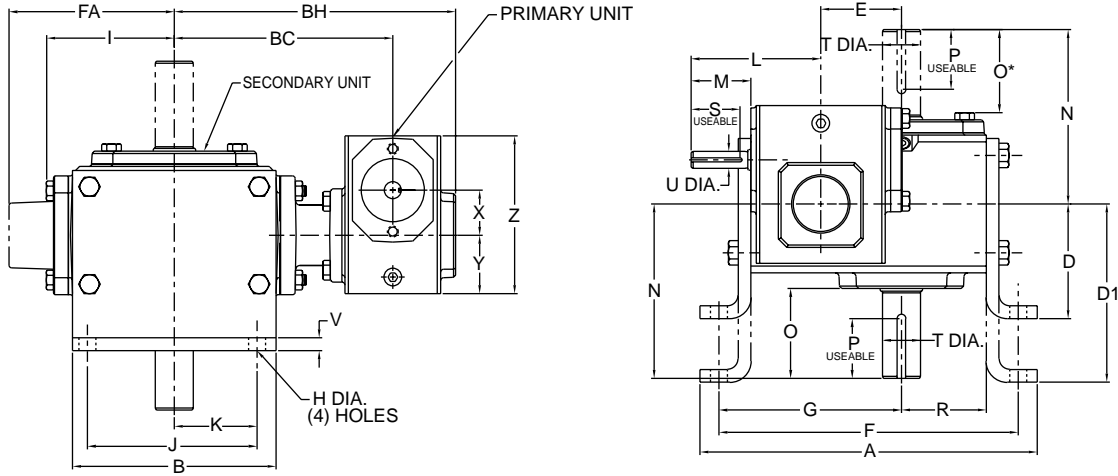


Double Reduction

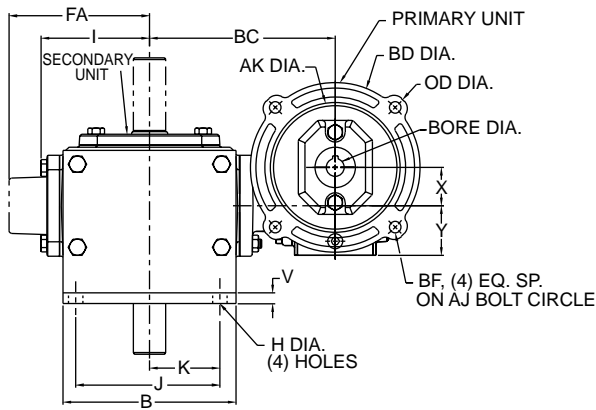
Worm / Worm Dimensions

Style DV(L or H)

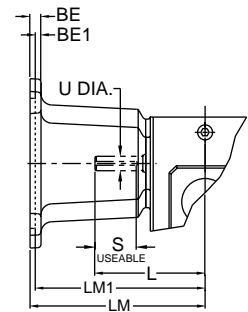


Styles DV(L or H)MQ & DV(L or H)M

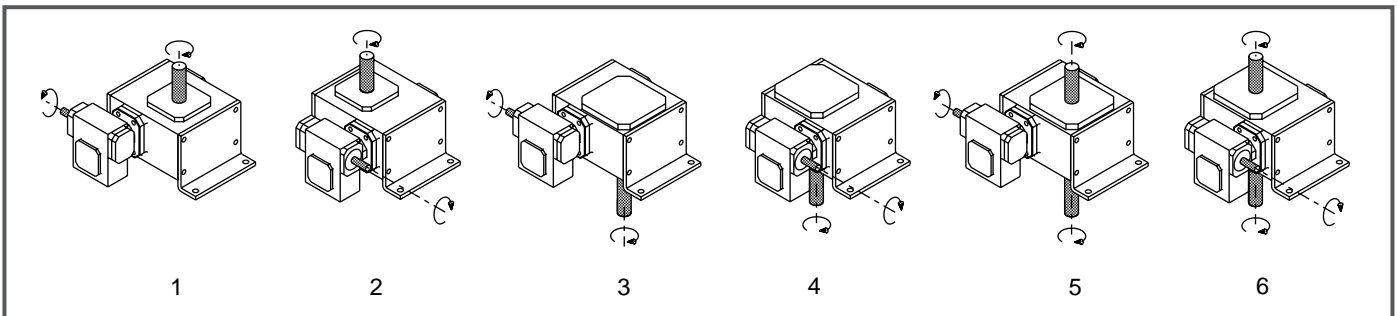
STYLE DV(L or H)MQ
(NEMA AND IEC B5 METRIC MOTORS)



STYLE DV(L or H)M
(NEMA MOTORS ONLY)



Assemblies



Note: The input shaft may be rotated in either direction. Units are for mounting as shown. Contact factory for other mountings. Assembly positions also apply to motor flange units ("MQ" and "M").



Double Reduction

Styles DV(L or H), DV(L or H)MQ, DV(L or H)M

UNIT	A	B	BC	BH	D	D1	E	F	FA	G	H	I	J	K	L	M	N	O	O*
213	7.26	4.00	5.32	7.16	2.63	3.56	1.333	6.50	N/A	3.86	.38	2.61	3.00	1.50	3.82	1.76	4.00	2.16	1.94
215	7.88	5.00	5.85	7.69	3.00	4.38	1.540	7.00	N/A	4.28	.44	3.14	4.00	2.00	3.82	1.76	4.31	2.11	1.90
218	8.25	5.00	5.94	7.79	3.00	4.38	1.750	7.37	N/A	4.50	.44	3.24	4.00	2.00	3.82	1.76	4.31	2.05	1.84
220	9.38	6.00	6.32	8.16	3.13	4.88	2.063	8.38	N/A	5.09	.50	3.61	4.88	2.44	3.82	1.76	4.68	2.29	2.08
224	9.94	6.00	6.44	8.29	3.38	5.25	2.375	8.81	N/A	5.38	.50	3.77	4.88	2.44	3.82	1.76	5.14	2.66	2.44
226	11.24	7.00	7.01	8.85	3.63	5.56	2.625	10.12	N/A	6.12	.56	4.34	5.75	2.88	3.82	1.76	5.63	2.73	2.52
230	12.50	8.00	7.86	10.06	3.94	5.88	3.000	11.13	N/A	6.75	.56	4.84	6.00	3.00	4.35	1.76	6.75	3.60	3.36
232	13.00	8.50	8.05	10.25	4.69	6.25	3.250	11.88	N/A	7.13	.56	5.02	6.13	3.06	4.35	1.76	7.06	3.66	3.42
242	16.26	10.00	9.18	11.57	5.00	7.50	4.250	14.88	N/A	8.69	.69	6.10	7.88	3.94	4.82	1.76	8.12	4.50	4.21
252	19.62	13.00	11.57	14.47	5.16	9.16	5.250	18.00	N/A	10.88	.78	7.50	10.00	5.00	6.07	2.38	9.06	4.78	4.53
2600	23.26	14.75	13.30	16.70	7.31	9.63	6.000	20.88	10.24	12.19	.91	N/A	11.76	5.88	6.76	2.38	10.00	4.66	4.66
2700	26.91	14.88	12.96	16.90	7.00	N/A	7.000	23.99	10.63	13.87	1.13	N/A	12.50	6.25	6.76	2.38	11.76	5.69	5.69
2800	28.96	17.00	13.94	18.19	8.00	N/A	8.000	25.50	11.93	14.38	1.13	N/A	14.00	7.00	9.57	3.47	12.25	6.02	6.02
21000	37.47	20.88	17.05	22.30	9.00	N/A	10.000	30.75	14.34	17.76	1.44	N/A	17.75	8.88	10.88	3.38	14.75	6.80	6.80

UNIT	P**	R	S**	T Dia.	U Dia.	V	X	Y	Z
213	3/16 x 1.50	1.72	1/8 x 1.44	.625	.500	.25	1.333	1.72	4.66
215	3/16 x 1.50	1.91	1/8 x 1.44	.750	.500	.25	1.333	1.72	4.66
218	3/16 x 1.38	2.06	1/8 x 1.44	.875	.500	.25	1.333	1.72	4.66
220	1/4 x 1.44	2.28	1/8 x 1.44	1.000	.500	.38	1.333	1.72	4.66
224	1/4 x 1.75	2.50	1/8 x 1.44	1.125	.500	.38	1.333	1.72	4.66
226	1/4 x 2.00	2.94	1/8 x 1.44	1.250	.500	.38	1.333	1.72	4.66
230	1/4 X 2.25	3.25	3/16 x 1.50	1.250	.625	.38	1.540	1.91	5.38
232	3/8 X 2.62	3.50	3/16 x 1.50	1.500	.625	.38	1.540	1.91	5.38
242	1/2 X 3.06	4.44	3/16 x 1.50	1.875	.625	.50	2.063	2.28	6.38
252	1/2 x 3.50	5.12	3/16 x 1.75	2.000	.750	.50	2.625	2.94	8.00
2600	5/8 x 4.00	6.50	3/16 x 1.75	2.500	.875	.50	3.250	3.50	9.38
2700	5/8 x 4.00	7.59	3/16 x 1.75	2.750	.875	.75	3.250	3.50	9.38
2800	3/4 x 4.50	8.86	1/4 x 2.88	3.000	1.250	.75	4.250	4.44	11.38
21000	7/8 x 5.00	10.36	1/4 x 3.00	3.750	1.250	1.00	5.250	5.12	14.00

NEMA Motor Data

NEMA Motor Mounting Dimensions

Frame	AJ	AK	BD	OD	BE	BE1	BORE	KWY.**	BF
48CZ	3.75	3.00	3.88	4.36	.38	N/A	.500	1/8 x 1/16	.28
56C	5.88	4.50	5.88	6.64	.38	N/A	.625	3/16 x 3/32	.41
140TC	5.88	4.50	5.88	6.64	.38	N/A	.875	3/16 x 3/32	.41
180TC	7.25	8.50	9.00	N/A	N/A	.50	1.125	1/4 x 1/8	.53
210TC	7.25	8.50	9.00	N/A	N/A	.50	1.375	5/16 x 5/32	.53
250TC	7.25	8.50	9.00	N/A	N/A	.50	1.625	3/8 x 3/16	.53

**keyway width by depth

* applies to double output shaft-all sizes, and single output shaft-sizes 242 & larger
**keyway width by length

NEMA Motor Flange Face Locations

UNIT	48CZ			56C/140TC			180TC			210TC			250TC		
	LM	RQ	LQ	LM	RQ	LQ	LM1	RQ	LQ1	LM1	RQ	LQ1	LM1	RQ	LQ1
213	5.63	3.09	3.46	6.07	3.09	3.46	N/A	N/A	N/A	N/A	N/A	N/A	N/A	N/A	N/A
215	5.63	3.09	3.46	6.07	3.09	3.46	N/A	N/A	N/A	N/A	N/A	N/A	N/A	N/A	N/A
218	5.63	3.09	3.46	6.07	3.09	3.46	N/A	N/A	N/A	N/A	N/A	N/A	N/A	N/A	N/A
220	5.63	3.09	3.46	6.07	3.09	3.46	N/A	N/A	N/A	N/A	N/A	N/A	N/A	N/A	N/A
224	5.63	3.09	3.46	6.07	3.09	3.46	N/A	N/A	N/A	N/A	N/A	N/A	N/A	N/A	N/A
226	5.63	3.09	3.46	6.07	3.09	3.46	N/A	N/A	N/A	N/A	N/A	N/A	N/A	N/A	N/A
230	6.16	3.62	3.99	6.60	3.62	3.99	N/A	N/A	N/A	N/A	N/A	N/A	N/A	N/A	N/A
232	6.16	3.62	3.99	6.60	3.62	3.99	N/A	N/A	N/A	N/A	N/A	N/A	N/A	N/A	N/A
242	6.63	4.06	4.46	7.07	4.06	4.46	N/A	N/A	N/A	N/A	N/A	N/A	N/A	N/A	N/A
252	N/A	N/A	N/A	8.32	4.82	5.19	9.32	5.13	5.62	9.32	N/A	N/A	N/A	N/A	N/A
2600	N/A	N/A	N/A	9.01	5.51	5.88	10.01	5.81	6.31	10.01	6.25	6.75	N/A	N/A	N/A
2700	N/A	N/A	N/A	9.01	5.51	5.88	10.01	5.81	6.31	10.01	6.25	6.75	N/A	N/A	N/A
2800	N/A	N/A	N/A	11.81	6.04	6.45	12.90	6.68	7.21	12.90	6.68	7.21	13.46	7.24	7.77
21000	N/A	N/A	N/A	13.21	7.35	7.85	14.30	7.98	8.61	14.30	7.98	8.61	14.86	8.54	9.17

Note: All dimensions listed are for reference only. Contact factory for certified dimensions.

WARNING For safety, purchaser or user should provide protective guards over shaft extensions and any couplings, sheaves and belts, sprockets and chains, etc., mounted thereon.

IEC B5 & B3/B5 Metric Motor Flange Face Locations

UNIT	D63D		D71D		D80D		D90D		D100LD D112MD		D132D	
	LQ	RQ	LQ	RQ	LQ	RQ	LQ	RQ	LQ	RQ	LQ	RQ
213	2.62	2.45	2.65	2.47	2.89	2.71	N/A	N/A	N/A	N/A	N/A	N/A
215	2.62	2.45	2.65	2.47	2.89	2.71	N/A	N/A	N/A	N/A	N/A	N/A
218	2.62	2.45	2.65	2.47	2.89	2.71	N/A	N/A	N/A	N/A	N/A	N/A
220	2.62	2.45	2.65	2.47	2.89	2.71	N/A	N/A	N/A	N/A	N/A	N/A
224	2.62	2.45	2.65	2.47	2.89	2.71	N/A	N/A	N/A	N/A	N/A	N/A
226	2.62	2.45	2.65	2.47	2.89	2.71	N/A	N/A	N/A	N/A	N/A	N/A
230	3.15	2.98	3.18	3.00	3.42	3.24	N/A	N/A	N/A	N/A	N/A	N/A
232	3.15	2.98	3.18	3.00	3.42	3.24	N/A	N/A	N/A	N/A	N/A	N/A
242	3.62	3.43	3.65	3.44	3.89	3.68	N/A	N/A	N/A	N/A	N/A	N/A
252	N/A	N/A	4.28	4.09	4.90	4.72	5.30	5.07	N/A	N/A	N/A	N/A
2600	N/A	N/A	4.97	4.78	5.59	5.41	5.59	5.41	5.99	5.76	N/A	N/A
2700	N/A	N/A	4.97	4.78	5.59	5.41	5.59	5.41	5.99	5.76	N/A	N/A
2800	N/A	N/A	N/A	N/A	N/A	N/A	6.38	6.16	6.39	6.14	7.17	6.93
21000	N/A	N/A	N/A	N/A	N/A	N/A	7.78	7.46	7.78	7.45	8.57	8.24

Note: Metric motor flanges are available in quill-style (DVMQ) only.

Metric Motor Data

IEC B5 & B3/B5 Metric Motor Mounting Dimensions

(All dimensions given in millimeters)

Frame	AJ	AK	BD	OD	BE	BORE	KWY.**	BF TAP
D63D	115	95	117	131	10	11	4 x 2	M8 x 1.25
D71D	130	110	132	146	11	14	5 x 2.5	M8 x 1.25
D80D	165	130	165	184	15	19	6 x 3	M10 x 1.50
D90D	165	130	165	184	15	24	8 x 3.5	M10 x 1.50
D100LD*	215	180	216	237	18	28	8 x 3.5	M12 x 1.75
D132D	265	230	267	290	18	38	10 x 4	M12 x 1.75

*also applies to D112MD
**keyway width by depth