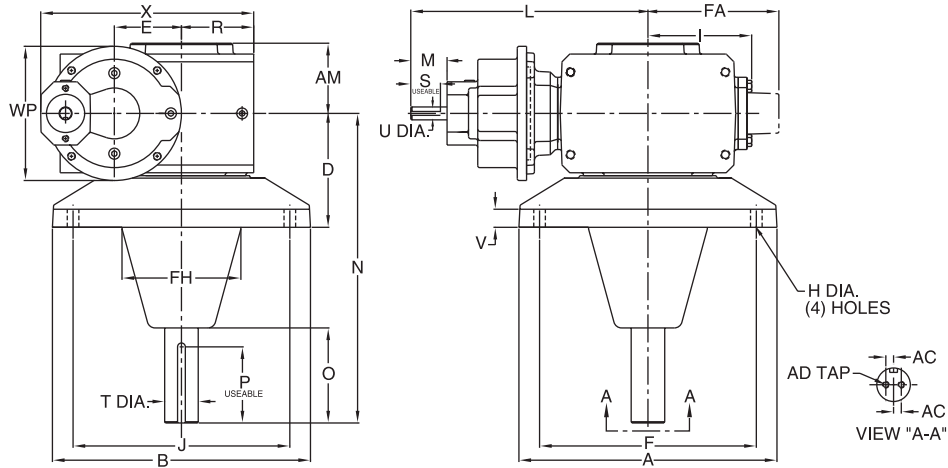


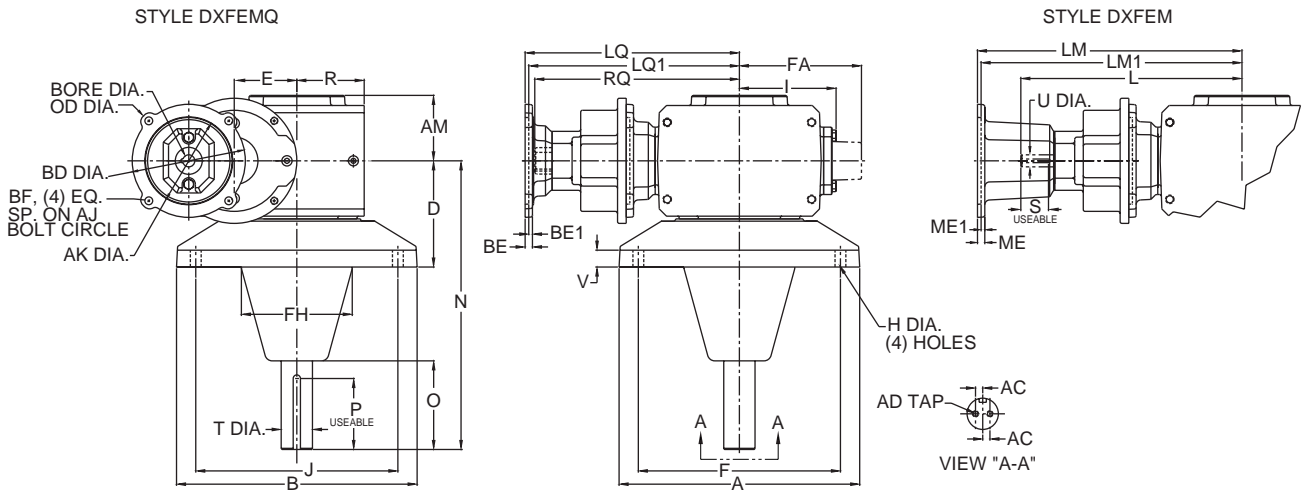
# Double Reduction

## Helical / Worm Dimensions

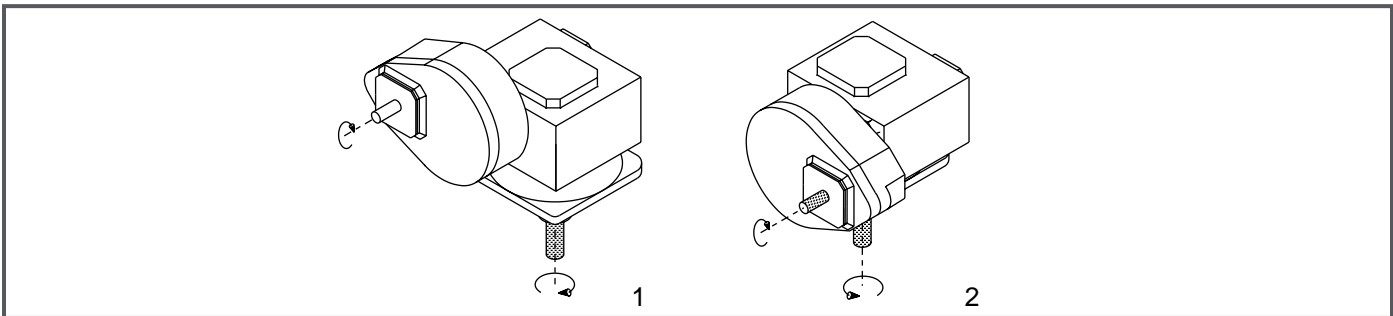
### Style DXFE



### Styles DXFEMQ & DXFEM



### Assemblies



Note: The input shaft may be rotated in either direction. Units are for mounting as shown. Contact factory for other mountings. Assembly positions also apply to motor flange units ("MQ" and "M").

**GROVE GEAR**

Davis Industries, Inc. Phone & Fax: 800-577-0559 E-mail: sales@davis-ohio.com

# Double Reduction

## Styles DXFE, DXFEMQ & DXFEM

UNIT	A	AC	AD	AM	B	D	E	F	FA	FH	H Dia.	I	J	L	M	N	O
230	11.00	.375	.31-18 UNC x 1.00 DP	3.15	11.00	4.60	3.000	9.00	N/A	5.12	.56	4.84	9.00	11.30	1.76	14.38	4.96
232	12.50	.375	.31-18 UNC x 1.00 DP	3.40	12.50	5.52	3.250	10.50	N/A	5.75	.56	5.02	10.50	11.49	1.76	15.00	4.63
242	14.00	.500	.38-16 UNC x 1.00 DP	3.62	14.00	5.74	4.250	12.00	N/A	6.75	.69	6.10	12.00	17.48	3.61	16.50	5.91
252	16.00	.750	.38-16 UNC x 1.00 DP	4.28	16.00	6.00	5.250	14.00	N/A	8.00	.81	7.50	14.00	18.88	3.61	16.50	5.62
2600	19.50	.750	.38-16 UNC x 1.00 DP	5.28	19.50	7.00	6.000	17.00	10.24	9.50	.88	N/A	17.00	19.60	3.61	22.50	7.63
2700	22.00	1.000	.38-16 UNC x 1.00 DP	6.06	22.00	8.50	7.000	19.00	10.63	10.75	1.13	N/A	19.00	19.68	2.50	24.00	7.63
2800	28.00	1.062	.62-11 UNC x 1.50 DP	6.22	28.00	10.00	8.000	24.00	11.93	13.75	1.31	N/A	24.00	21.30	3.00	27.06	9.25
21000	32.00	1.188	.62-11 UNC x 1.50 DP	7.94	32.00	12.50	10.000	28.00	14.34	17.00	1.31	N/A	28.00	25.78	3.50	29.50	9.43

UNIT	P**	R	S**	T Dia.	U Dia.	V	WP	X
230	3/8 x 3.88	3.25	3/16 x 1.44	1.438	.625	.78	6.50	9.82
232	3/8 x 3.69	3.50	3/16 x 1.44	1.625	.625	.88	6.50	10.32
242	3/8 x 4.68	4.44	1/4 x 2.17	1.688	1.250	1.00	8.50	13.31
252	1/2 x 4.63	5.12	1/4 x 2.17	2.188	1.250	1.25	8.50	14.99
2600	5/8 x 6.50	6.50	1/4 x 2.17	2.438	1.250	1.50	8.50	17.12
2700	3/4 x 6.44	7.59	1/4 x 2.25	2.937	1.125	1.75	10.36	21.84
2800	7/8 x 8.00	8.86	5/16 x 2.75	3.438	1.375	2.00	11.64	25.93
21000	1 x 7.75	10.36	3/8 x 3.25	3.938	1.500	2.25	13.85	31.35

\*applies to double output shaft

\*\*keyway width by length

Note: "0" on units size 2600 thru 21000 is the minimum dimension to output seal or screw head.

Sizes 2700 through 21000 have an input shaft which is not aligned with the centerline of the gearbox.

Contact factory for further dimension details.

## NEMA Motor Data

### NEMA Motor Flange Face Locations

UNIT	56C/140TC			180TC			210TC			250TC		
	LM	RQ	LQ	LM1	RQ	LQ1	LM1	RQ	LQ1	LM1	RQ	LQ1
230	13.55	10.44	10.94	N/A	N/A	N/A	N/A	N/A	N/A	N/A	N/A	N/A
232	13.74	10.63	11.13	N/A	N/A	N/A	N/A	N/A	N/A	N/A	N/A	N/A
242	N/A	N/A	N/A	20.66	14.46	14.97	20.66	14.46	14.97	21.22	14.86	15.53
252	N/A	N/A	N/A	22.06	15.86	16.37	22.06	15.86	16.37	22.62	16.26	16.93
2600	N/A	N/A	N/A	22.78	16.58	17.09	22.78	16.58	17.09	23.34	16.98	17.65

### NEMA Motor Mounting Dimensions

Frame	AJ	AK	BD	OD	BE	BE1	ME	ME1	BORE	KWY.**	BF
56C	5.88	4.50	5.88	6.64	.38	N/A	.38	N/A	.625	3/16 x 3/32	.41
140TC	5.88	4.50	5.88	6.64	.38	N/A	.38	N/A	.875	3/16 x 3/32	.41
180TC	7.25	8.50	9.00	9.00	N/A	.50	N/A	.50	1.125	1/4 x 1/8	.53
210TC	7.25	8.50	9.00	9.00	N/A	.50	N/A	.50	1.375	5/16 x 5/32	.53
250TC	7.25	8.50	9.00	9.00	N/A	.50	N/A	.50	1.625	3/8 x 3/16	.53

\*\*keyway width by depth

Note: All dimensions listed are for reference only. Contact factory for certified dimensions.

**⚠ WARNING** For safety, purchaser or user should provide protective guards over shaft extensions and any couplings, sheaves and belts, sprockets and chains, etc., mounted thereon.