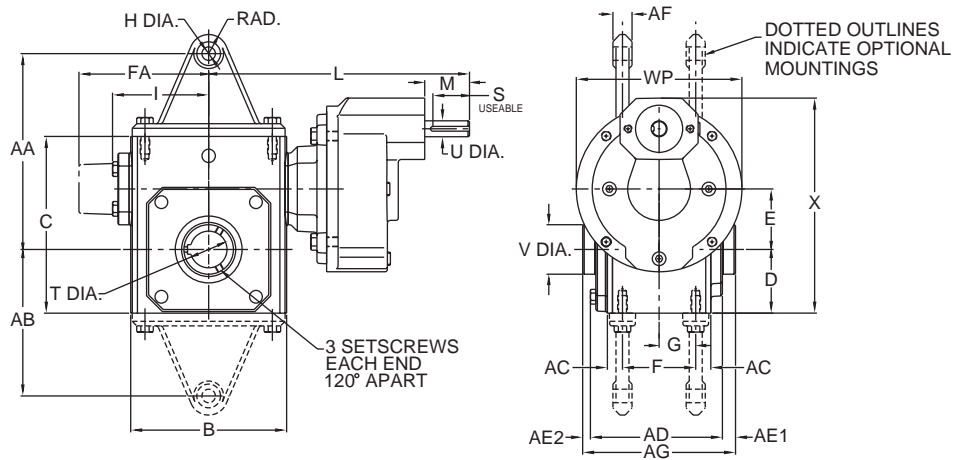


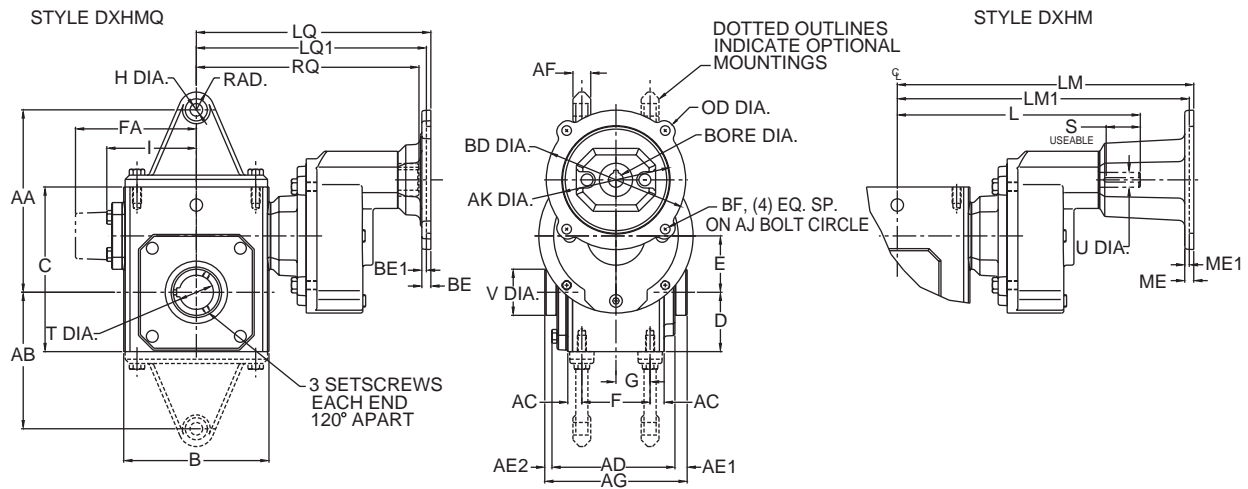
# Double Reduction

## Helical / Worm Dimensions

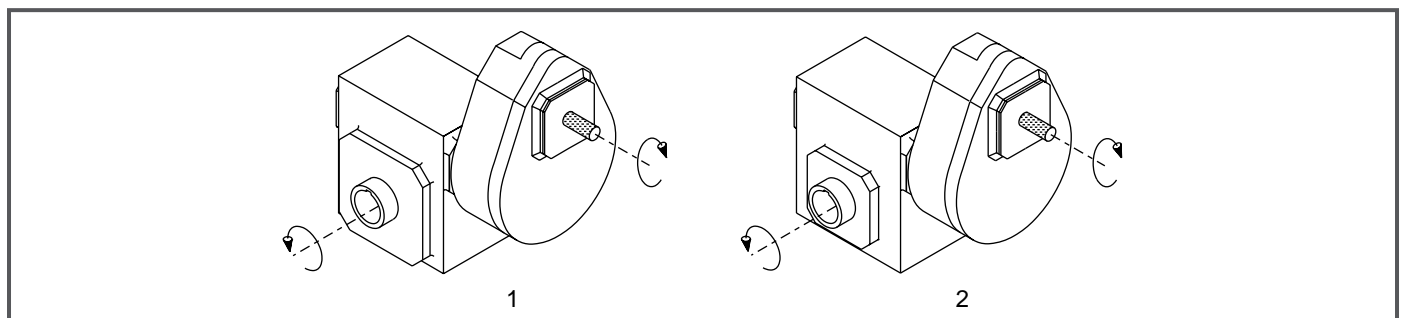
### Style DXH



### Styles DXHMQ & DXHM



### Assemblies



Note: The input shaft may be rotated in either direction. Units are for mounting as shown. Contact factory for other mountings. Assembly positions also apply to motor flange units ("MQ" and "M").

**GROVE GEAR**

Davis Industries, Inc. Phone & Fax: 800-577-0559 E-mail: sales@davis-ohio.com

# Double Reduction

## Styles DXH, DXHMQ & DXHM

UNIT	AA	AB	AC	AD	AE1	AE2	AF	AG	B	C	D	E	F	FA	G	H Dia.	I	L	M	RAD.
213	4.19	2.97	.41	3.90	.53	.32	.25	4.75	3.80	4.66	1.72	1.333	2.00	N/A	1.00	.53	2.61	N/A	N/A	.50
215	5.97	4.41	.35	4.61	.51	.30	.75	5.42	5.19	5.38	1.91	1.540	2.75	N/A	1.38	.53	3.14	N/A	N/A	.75
218	6.19	4.56	.41	4.73	.49	.28	.75	5.50	5.19	5.75	2.06	1.750	2.75	N/A	1.38	.53	3.24	N/A	N/A	.75
220	7.24	5.43	.41	4.99	.61	.40	.75	6.00	5.80	6.38	2.28	2.063	3.00	N/A	1.50	.53	3.61	N/A	N/A	.75
224	7.69	5.75	.59	5.18	.51	.31	.75	6.00	6.12	6.94	2.50	2.375	2.88	N/A	1.44	.53	3.77	10.24	1.76	.75
226	8.81	6.69	.73	6.01	.60	.39	.75	7.00	7.38	8.00	2.94	2.625	3.38	N/A	1.69	.53	4.34	10.80	1.76	.75
230	10.63	8.25	.63	6.53	.60	.36	.75	7.50	8.12	8.88	3.25	3.000	4.00	N/A	2.00	.53	4.84	11.30	1.76	.88
232	10.88	8.50	.88	7.04	.54	.29	.75	7.88	8.75	9.38	3.50	3.250	4.00	N/A	2.00	.53	5.02	11.49	1.76	.88
242	11.94	9.44	.56	7.53	.63	.34	.75	8.50	10.25	11.38	4.44	4.250	5.00	N/A	2.50	.53	6.10	17.48	3.61	.75
252	13.88	10.12	.69	8.85	.97	.68	1.00	10.50	13.00	14.00	5.12	5.250	5.81	N/A	2.91	.66	7.50	18.88	3.61	1.00
2600	15.00	11.50	.88	10.52	.52	.52	.38	11.50	14.50	16.50	6.50	6.000	6.38	10.24	3.19	.66	N/A	19.60	3.61	.69
2700	N/A	N/A	1.06	11.36	1.09	1.09	N/A	13.50	14.88	18.91	7.59	7.000	5.50	10.63	2.75	N/A	N/A	19.68	2.50	N/A
2800	N/A	N/A	1.06	12.48	1.03	1.03	N/A	14.50	17.00	20.96	8.86	8.000	6.50	11.93	3.25	N/A	N/A	21.30	3.00	N/A
21000	N/A	N/A	1.33	15.78	1.39	1.39	N/A	18.50	20.88	25.47	10.36	10.000	6.88	14.34	3.44	N/A	N/A	25.78	3.50	N/A

UNIT	S**	T-max*	T-kwy***	U Dia.	V Dia.	WP	X
213	N/A	.625	3/16 x 3/32	N/A	1.00	5.00	6.16
215	N/A	.625	3/16 x 3/32	N/A	1.00	5.00	6.56
218	N/A	1.000	1/4 x 1/8	N/A	1.44	5.00	6.92
220	N/A	1.438	3/8 x 3/16	N/A	1.94	5.00	7.45
224	3/16 x 1.44	1.438	3/8 x 3/16	.625	1.94	6.50	8.45
226	3/16 x 1.44	1.438	3/8 x 3/16	.625	1.94	6.50	9.13
230	3/16 x 1.44	1.938	1/2 x 1/4	.625	2.51	6.50	9.82
232	3/16 x 1.44	1.938	1/2 x 1/4	.625	2.51	6.50	10.32
242	1/4 x 2.17	2.188	1/2 x 1/4	1.250	2.75	8.50	13.31
252	1/4 x 2.17	3.438	7/8 x 7/16	1.250	4.26	8.50	14.99
2600	1/4 x 2.17	3.438	7/8 x 7/16	1.250	4.18	8.50	17.12
2700	1/4 x 2.25	3.938	1 x 1/2	1.125	4.92	10.36	21.84
2800	5/16 x 2.75	4.438	1 x 1/2	1.375	5.55	11.64	25.93
21000	3/8 x 3.25	5.438	1-1/4 x 5/8	1.500	6.67	13.85	31.35

\* T dimensions are for max. bore diameter. For other bore diameters refer to catalog page 169.

\*\* keyway width by length

\*\*\*keyway width by depth

Note: Sizes 2700 through 21000 have an input shaft which is not aligned with the centerline of the gearbox.

Contact factory for further dimension details.

Note: All dimensions listed are for reference only. Contact factory for certified dimensions.

**⚠️WARNING** For safety, purchaser or user should provide protective guards over shaft extensions and any couplings, sheaves and belts, sprockets and chains, etc., mounted thereon.

## NEMA Motor Data

### NEMA Motor Flange Face Locations

UNIT	48CZ			56C/140TC			180TC			210TC			250TC		
	LM	RQ	LQ	LM	RQ	LQ	LM1	RQ	LQ1	LM1	RQ	LQ1	LM1	RQ	LQ1
213	N/A	7.79	8.29	N/A	7.79	8.29	N/A	N/A	N/A	N/A	N/A	N/A	N/A	N/A	N/A
215	N/A	8.32	8.82	N/A	8.32	8.82	N/A	N/A	N/A	N/A	N/A	N/A	N/A	N/A	N/A
218	N/A	8.42	8.92	N/A	8.42	8.92	N/A	N/A	N/A	N/A	N/A	N/A	N/A	N/A	N/A
220	N/A	8.79	9.29	N/A	8.79	9.29	N/A	N/A	N/A	N/A	N/A	N/A	N/A	N/A	N/A
224	N/A	N/A	N/A	12.49	9.38	9.88	N/A	N/A	N/A	N/A	N/A	N/A	N/A	N/A	N/A
226	N/A	N/A	N/A	13.05	9.94	10.44	N/A	N/A	N/A	N/A	N/A	N/A	N/A	N/A	N/A
230	N/A	N/A	N/A	13.55	10.44	10.94	N/A	N/A	N/A	N/A	N/A	N/A	N/A	N/A	N/A
232	N/A	N/A	N/A	13.74	10.63	11.13	N/A	N/A	N/A	N/A	N/A	N/A	N/A	N/A	N/A
242	N/A	N/A	N/A	N/A	N/A	N/A	20.66	14.46	14.97	20.66	14.46	14.97	21.22	14.86	15.53
252	N/A	N/A	N/A	N/A	N/A	N/A	22.06	15.86	16.37	22.06	15.86	16.37	22.62	16.26	16.93
2600	N/A	N/A	N/A	N/A	N/A	N/A	22.78	16.58	17.09	22.78	16.58	17.09	23.34	16.98	17.65

### NEMA Motor Mounting Dimensions

Frame	AJ	AK	BD	OD	BE	BE1	ME	ME1	BORE	KWY.**	BF
48CZ	3.75	3.00	3.88	4.36	.38	N/A	.38	N/A	.500	1/8 x 1/16	.28
56C	5.88	4.50	5.88	6.64	.38	N/A	.38	N/A	.625	3/16 x 3/32	.41
140TC	5.88	4.50	5.88	6.64	.38	N/A	.38	N/A	.875	3/16 x 3/32	.41
180TC	7.25	8.50	9.00	9.00	N/A	.50	N/A	.50	1.125	1/4 x 1/8	.53
210TC	7.25	8.50	9.00	9.00	N/A	.50	N/A	.50	1.375	5/16 x 5/32	.53
250TC	7.25	8.50	9.00	9.00	N/A	.50	N/A	.50	1.625	3/8 x 3/16	.53

\*\*keyway width by depth