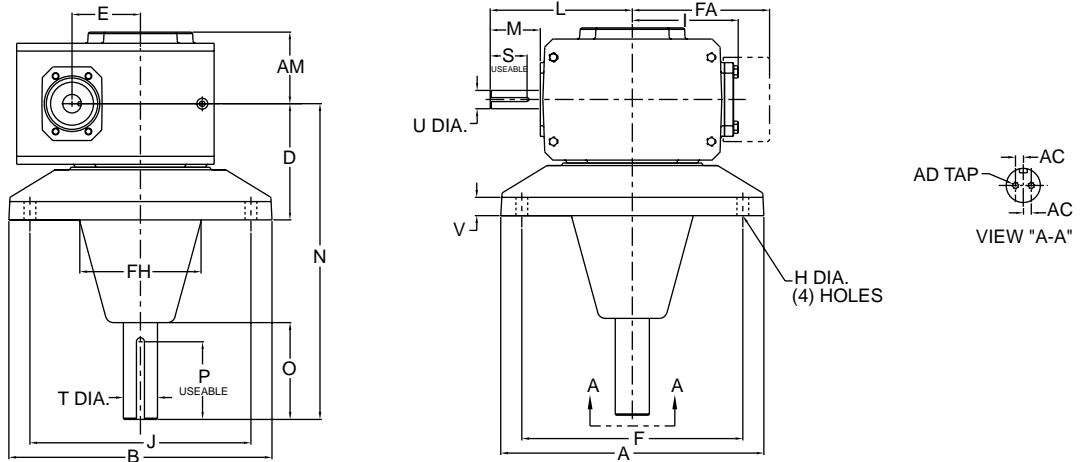


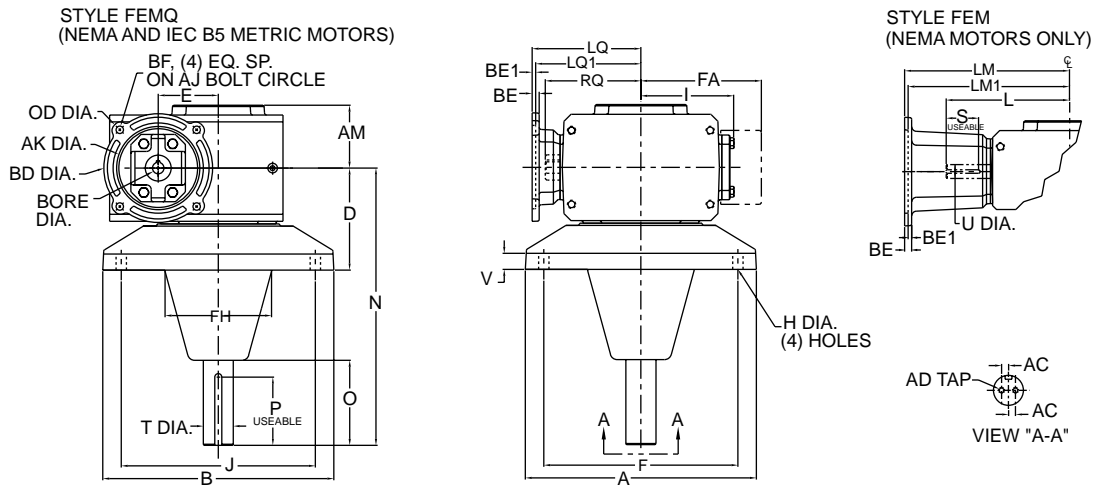
Single Reduction

Worm Gear Dimensions

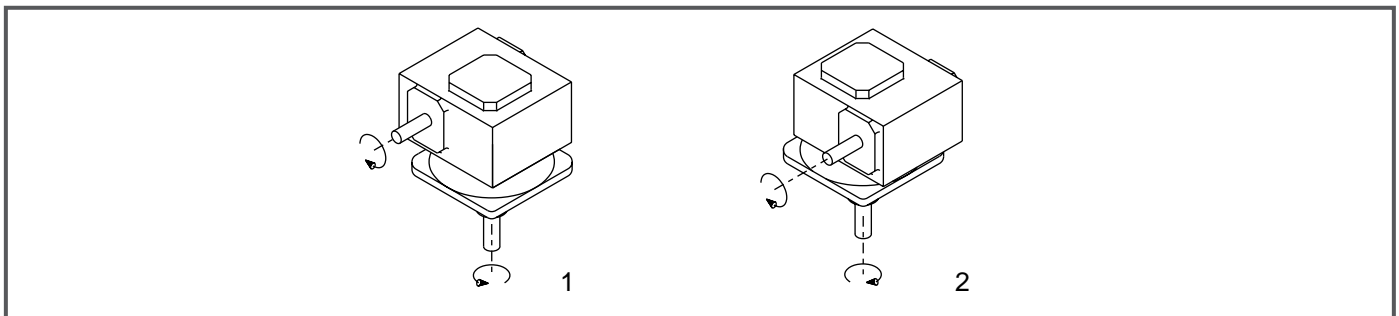
Style FE



Styles FEMQ & FEM



Assemblies



Note: The input shaft may be rotated in either direction. Units are for mounting as shown. Contact factory for other mountings or assembly position options. Assembly positions also apply to motor flange units ("MQ" and "M").

GROVE GEAR

Davis Industries, Inc. Phone & Fax: 800-577-0559 E-mail: sales@davis-ohio.com

Single Reduction

Styles FE, FEMQ, FEM

UNIT	A	AC	AD	AM	B	D	E	F	FA	FH	H Dia.	I	J	L	M	N	O	P**
230	11.00	.375	.31-18 UNC X 1.00 DP	3.15	11.00	4.60	3.000	9.00	N/A	5.12	.56	4.84	9.00	6.57	2.38	14.38	4.96	3/8 X 3.88
232	12.50	.375	.31-18 UNC X 1.00 DP	3.40	12.50	5.52	3.250	10.50	N/A	5.75	.56	5.02	10.50	6.76	2.38	15.00	4.63	3/8 X 3.69
242	14.00	.500	.38-16 UNC X 1.00 DP	3.62	14.00	5.74	4.250	12.00	N/A	6.75	.69	6.10	12.00	9.57	3.47	16.50	5.91	3/8 X 4.68
252	16.00	.750	.38-16 UNC X 1.00 DP	4.28	16.00	6.00	5.250	14.00	N/A	8.00	.81	7.50	14.00	10.88	3.38	16.50	5.62	1/2 X 4.63
2600	19.50	.750	.38-16 UNC X 1.00 DP	5.28	19.50	7.00	6.000	17.00	11.13	9.50	.88	N/A	17.00	11.78	3.41	22.50	7.63	5/8 X 6.50
2700	22.00	1.000	.38-16 UNC X 1.00 DP	6.06	22.00	8.50	7.000	19.00	11.37	10.75	1.13	N/A	19.00	11.50	2.97	24.00	7.63	3/4 X 6.44
2800	28.00	1.062	.62-11 UNC X 1.50 DP	6.22	28.00	10.00	8.000	24.00	12.52	13.75	1.31	N/A	24.00	12.50	2.84	27.06	9.25	7/8 X 8.00
21000	32.00	1.188	.62-11 UNC X 1.50 DP	7.94	32.00	12.50	10.000	28.00	14.69	17.00	1.31	N/A	28.00	15.50	3.76	29.50	9.43	1 X 7.75

UNIT	S**	T Dia.	U Dia.	V
230	3/16 x 1.75	1.438	.875	.78
232	3/16 x 1.75	1.625	.875	.88
242	1/4 x 2.88	1.688	1.250	1.00
252	1/4 x 3.00	2.188	1.250	1.25
2600	3/8 x 3.00	2.438	1.500	1.50
2700	3/8 x 2.87	2.937	1.625	1.75
2800	1/2 x 2.81	3.438	1.875	2.00
21000	1/2 x 3.69	3.938	2.250	2.25

Note: "O" on units size 2600 through 21000 is the minimum dimension to output seal or screw head.

**keyway width by length

Note: All dimensions listed are for reference only. Contact factory for certified dimensions.

⚠ WARNING For safety, purchaser or user should provide protective guards over shaft extensions and any couplings, sheaves and belts, sprockets and chains, etc., mounted thereon.

NEMA Motor Data

NEMA Motor Mounting Dimensions

Frame	AJ	AK	BD	OD	BE	BE1	BORE	KWY.**	BF*
56C	5.88	4.50	5.88	6.64	.38	N/A	.625	3/16 x 3/32	.41
140TC	5.88	4.50	5.88	6.64	.38	N/A	.875	3/16 x 3/32	.41
180TC	7.25	8.50	9.00	N/A	N/A	.50	1.125	1/4 x 1/8	.53
210TC	7.25	8.50	9.00	N/A	N/A	.50	1.375	5/16 x 5/32	.53
250TC	7.25	8.50	9.00	N/A	N/A	.50	1.625	3/8 x 3/16	.53

*Holes rotated 45° from positions shown on size 2600 "M" style "C" face with motor flange sizes 180TC-250TC.

**keyway width by depth

NEMA Motor Flange Face Locations

UNIT	56C/140T			180TC			210TC			250TC		
	LM	RQ	LQ	LM	RQ	LQ	LM1	RQ	LQ1	LM1	RQ	LQ1
230	8.82	5.32	5.69	9.82	5.63	6.12	9.82	6.06	6.56	N/A	N/A	N/A
232	9.01	5.51	5.88	10.01	5.81	6.31	10.01	6.25	6.75	N/A	N/A	N/A
242	11.81	6.04	6.45	12.90	6.68	7.21	12.90	6.68	7.21	13.46	7.24	7.77
252	13.21	7.35	7.85	14.30	7.98	8.61	14.30	7.98	8.61	14.86	8.54	9.17
2600	N/A	10.01	10.45	15.88	8.69	9.33	15.88	8.69	9.33	16.50	8.69	9.94
2700	N/A	N/A	N/A	15.50	N/A	N/A	15.50	N/A	N/A	15.50	N/A	N/A
2800	N/A	N/A	N/A	N/A	N/A	N/A	16.58	N/A	N/A	16.58	N/A	N/A

Metric Motor Data

IEC B5 & B3/B5 Metric Motor Flange Face Locations

UNIT	D71D		D80D		D90D		D100LD D112MD		D132D	
	LQ	RQ	LQ	RQ	LQ	RQ	LQ	RQ	LQ	RQ
230	4.78	4.59	5.41	5.22	5.41	5.22	5.80	5.57	N/A	N/A
232	4.97	4.78	5.59	5.41	5.59	5.41	5.99	5.76	N/A	N/A
242	N/A	N/A	N/A	N/A	6.38	6.16	6.39	6.14	7.17	6.93
252	N/A	N/A	N/A	N/A	7.78	7.46	7.78	7.45	8.57	8.24

Note: Metric motor flanges are available in quill-style (FEMQ) only.

IEC B5 & B3/B5 Metric Motor Mounting Dimensions

(All dimensions given in millimeters)

Frame	AJ	AK	BD	OD	BE	BORE	KWY.**	BFTAP
D71D	130	110	132	146	11	14	5 x 2.5	M8 x 1.25
D80D	165	130	165	184	15	19	6 x 3	M10 x 1.50
D90D	165	130	165	184	15	24	8 x 3.5	M10 x 1.50
D100LD*	215	180	216	237	18	28	8 x 3.5	M12 x 1.75
D132D	265	230	267	290	18	38	10 x 4	M12 x 1.75

*also applies to D112MD

**keyway width by depth